

## Best Friend Bows

"Matching bows for you and your pet."

Bowdabra® Hair Bow Tool & Ruler

ZPET001

Copyrighted 2010 HPA Enterprises

# + Materials Needed:

- [Mini Bowdabra](#)
- [Bowdabra Bow Wire](#)
- [Hair Bow Tool and Ruler](#)
- 21 cm of [White Satin 7/8" 08405-601](#)
- 16 cm of [Deep Blue Satin 5/8" 08403-567](#)
- (2) 5/16 Latex Elastics (Medium)
- French Clip
- Rhinestones
- Clear Nail Polish to keep ribbon ends from fraying
- Glue Dots or Hot Glue Gun

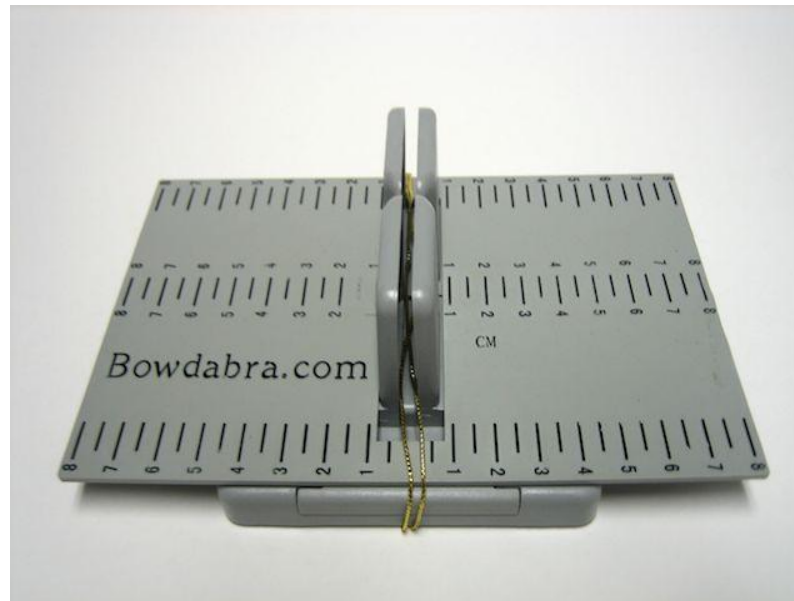
# + Step 1:

Begin by gathering your materials. You will need a Mini Bowdabra, Bowdabra Hair Bow Tool and Ruler, and Bowdabra Bow Wire.



## + Step 2:

Place the Bowdabra® Hair Bow Tool and Ruler (cm side) onto the Mini Bowdabra, leaving a space at the bottom for the Mini Bowdabra tower to move. Cut an 18" piece of Bowdabra Bow Wire and fold it in half. Lay it into the Mini Bowdabra. You'll have a loop at one end and two loose pieces at the opposite end.



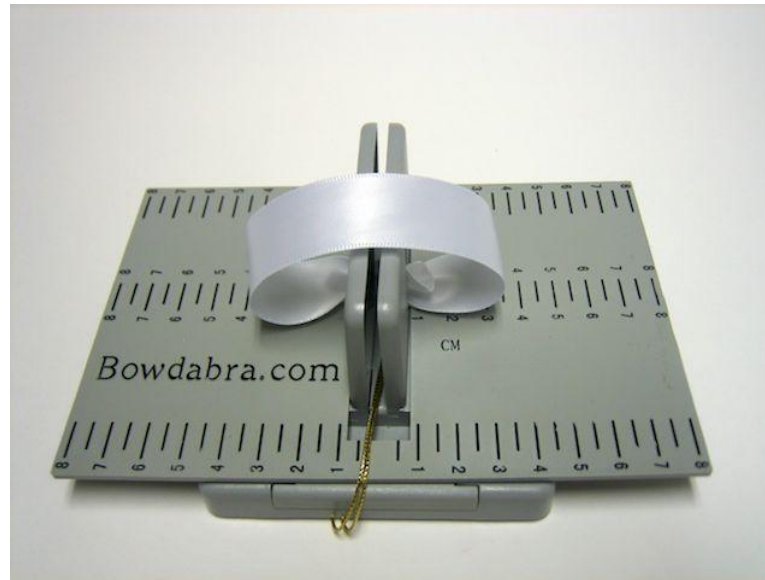
## + Step 3:

To make the 4cm wide bottom bow cut the ribbon 21cm long. Seal each end with clear nail polish. Begin by placing one end into the Mini Bowdabra.



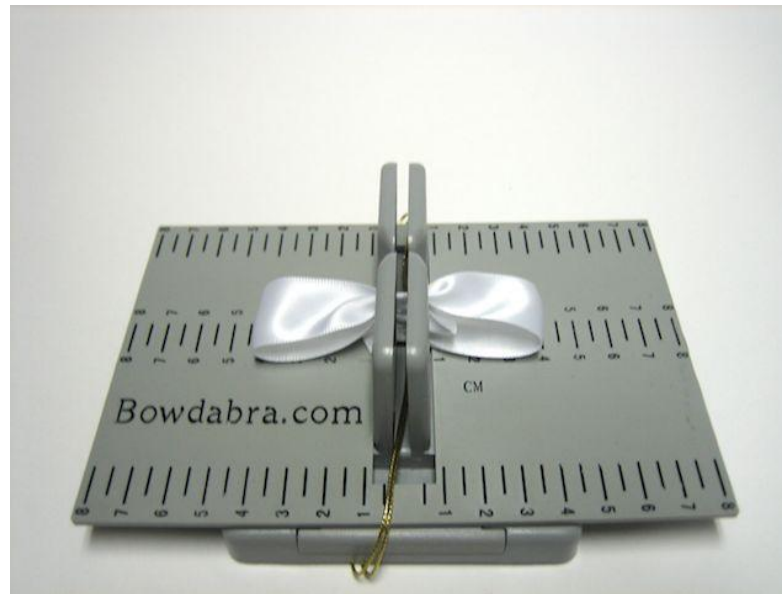
## + Step 4:

Fold the other ribbon end of the Mini Bowdabra towers and place into the Mini Bowdabra.



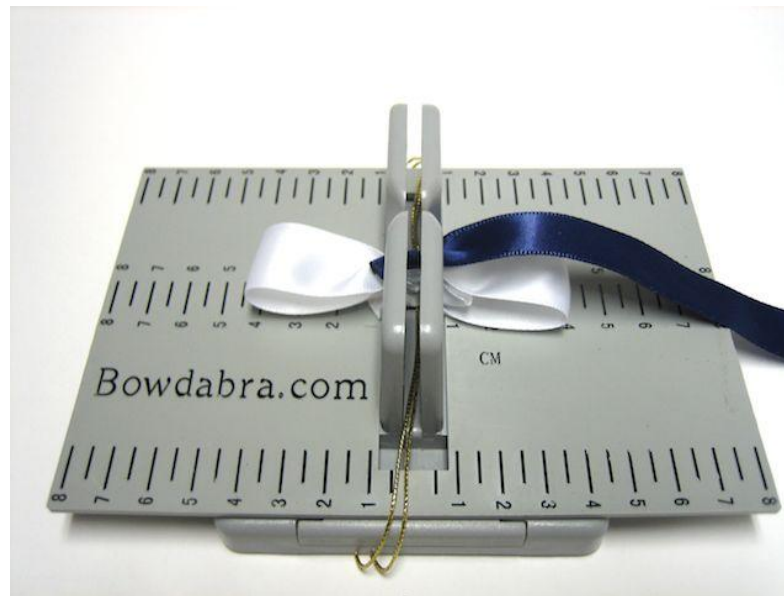
## + Step 5:

Using the Hair Bow Tool and Ruler as your guide position the loops evenly and symmetrically. Crease and press the ribbon in the center, into the Mini Bowdabra.



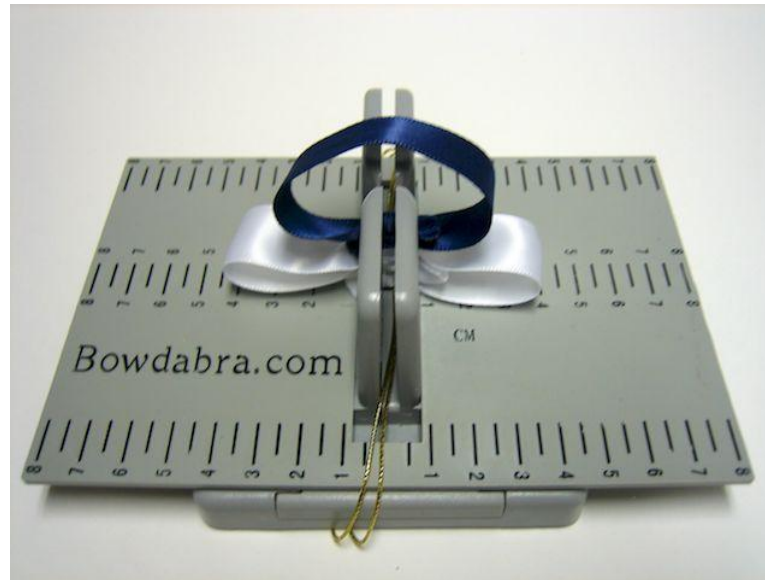
## + Step 6:

To make the 3cm wide top bow cut the ribbon 16cm long. Seal each end with clear nail polish. Begin by placing one end into the Mini Bowdabra.



# + Step 7:

Fold the other ribbon end of the Mini Bowdabra towers and place into the Mini Bowdabra.



## + Step 8:

Using the Hair Bow Tool and Ruler as your guide position the loops evenly and symmetrically. Crease and press the ribbon in the center, into the Mini Bowdabra.



# + Step 9:

Scrunch down with Mini Bowdabra Wand.



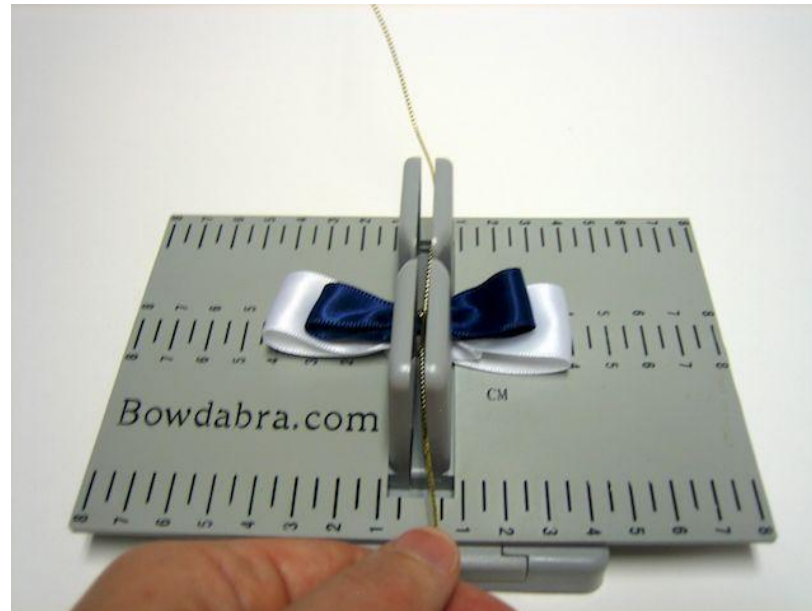
## + Step 10:

While the bow is still in the Mini Bowdabra, thread the two loose ends of the Mini Bowdabra Bow Wire through the loop at the other end.



# + Step 11:

Pull the Bowdabra Bow Wire tightly while the bow is still in the Mini Bowdabra.



## + Step 12:

Gently pull the bow out of the Mini Bowdabra.  
Separate the two loose ends of the Bowdabra Bow Wire and bring them around to the back of the bow and knot.



## + Step 13:

For your dog: Attach two 5/16" medium latex elastics using the Bowdabra Bow Wire. Bring the wire back to the front of the bow, knot, and then trim away the excess wire.



## + Step 14:

For you: Attach a small french clip using the Bowdabra Bow Wire. Bring the wire back to the front of the bow, knot, and then trim away the excess wire.



## + Step 15:

Using hot glue or glue dots attach two small rhinestones on the front of the bow to hide the Bowdabra Bow Wire. Both you and your pet can wear matching bows!





# Frequently Asked Questions

- **Can I use any type of ribbon when making hair bows?** All hair bow directions can be used with any style ribbon (organza, grosgrain, and stain).
- **How do I know which hair bow should be attached to which hair bow clip?** Experiment with different hair bow clips to determine which one is best for your application. It has less to do with the style of the bow and more to do with the type of hair the bow is going into.
- **Do I have to use Bowdabra Bow Wire?** Bowdabra Bow Wire is essential for making these hair bows. The design of the Bowdabra Bow Wire holds everything together tightly and makes for a long lasting sturdy hair bow. Bowdabra Bow Wire and Bowdabra Products can be found on the shelves of Michaels, A.C. Moore, Hancock Fabrics, Joann Fabrics, Pat Catan's, & Walmart.
- **How do I keep my stacked bows tight one on top of the other?** After you have tied the bows one on top of the other. Twist each individual bow clockwise to pull the Bowdabra Bow Wire tightly.
- **Why do my hair bows not look like the ones in the picture?** It is important to not skip any steps. Remember to always scrunch down the bow with your Mini Bowdabra Bow Wand, as well as pull your Bowdabra Bow Wire tightly while the bow is still inside the Mini Bowdabra. And always remember to fluff and shape your bow when you are done!
- **How do I keep my hair bows shape?** Once bow is made and shaped spray your bow with a regular starch according to the manufacture's directions. Let the bow dry for 1 – 2 minutes before using.
- **What is the best way to store my hair bows?** The best way to store hair bows is to make a hair bow holder . A hair bow holder keeps bows from getting crushed and /or misshapen in storage.
- **How do I keep my hair bows in fine hair?** To prevent hair bows from slipping out of fine hair; glue on the top-underneath of hair clips small strips of latex free (in case of allergies) shelf lining.

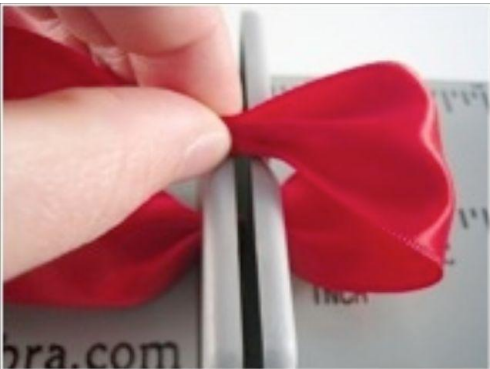


# Making creases

When making ribbon creases prior to setting them into the Mini Bowdabra Tower there are two separate types; “Mountain Up” and “Mountain Down”.



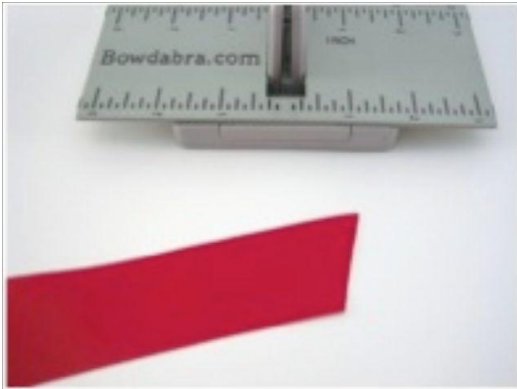
A “Mountain Down” crease is used when first beginning your bow. To make the crease pinch sides in and push center down. Place the “Mountain Down” crease into the Mini Bowdabra.



When making your bow loops pinch ribbon sides and push the center up. Press “Mountain Up” crease into the center of the Mini Bowdabra.

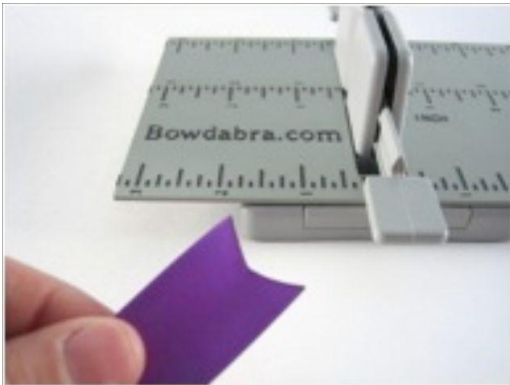


# Finishing Ribbon ends



## **Diagonal Cut:**

Position your scissors at an angle and cut the ribbon in a slant.



## **Dove-Tail:**

Dovetail both ends: fold the ribbon in half lengthwise. Position your scissors at the folded edge of the ribbon and cut the end at a 45° angle. Unfold your ribbon and you have a professional, finished look to your ribbon tails.



# Sealing ribbon



- **Bowdabra® recommends using clear nail polish to seal the ends of ribbon and prevent fraying. Clear nail polish dries quickly and allows all ages to participate in bow making, safely.**
- A fray blocker can also be used at the end of ribbons and is available at any local craft store.
- Placing the ends of the ribbon over the flame of a lighter can also seal the ribbon. However, extreme caution should be used! The flame can darken ribbon or even set the ribbon on fire.
- Another alternative for sealing ribbon is using a wood burning tool. Many professional bow makers choose to use a wood burning tool.